

TABLE À REPASSER ESCAMOTABLE PRUA SHORT

ATIM



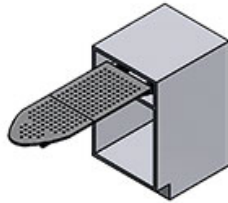
PRUA SHORT

ISTRUZIONI DI MONTAGGIO ASSEMBLY INSTRUCTIONS

MODELLO

MODEL:

411/78.1181.22



CONTENUTO DELLA CONFEZIONE INCLUDED IN THE PACKAGING

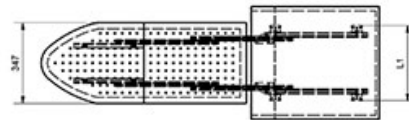
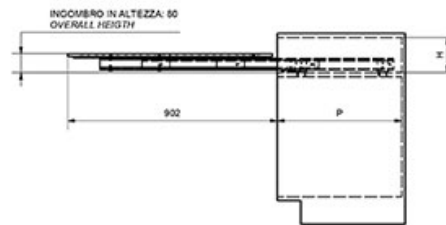
GUIDE + ASSE DA STIRO
SLIDES - IRONING BOARD



SACCHETTO ACCESSORI - ACCESSORIES

- A. Chiave esa. da 5 - n° 5 Allen key (x 1)
- B. Vite TCCE M6x12 - M6x12 SHCS screw (x 4)
- C. Perno - Pin (x2)
- D. Staffa di fissaggio - Fixing bracket (x4)
- E. Vite truciolare 3.0x20 - 3.0x20 Chipboard Screw (x 8)

DIMENSIONI GENERALI MOBILE GENERAL CABINET DIMENSIONS



DIMENSIONE - DIMENSION	SIMBOLO - SYMBOL	MIN
ALTEZZA - HEIGHT	H	MIN 140
PROFONDITA' - DEPTH	P	MIN 450
LARGHEZZA - WIDTH	L1	MIN 330

03 1 / 2

<https://www.qama.fr/planche-a-repasser-escamotable-prua-short-p69636>



Tel : 02 43 13 49 49

Fax : 02 43 30 26 16

www.qama.fr